



Workflow 2: Creating PDF Files Using Batch Plot

PDF files are the new standard for presenting final plans to contractors for bidding purposes. At the completion of the design for all projects it is required to generate PDF files for each final plan sheet. It is also imperative that the name of the PDF files match the sheet names within the plans. For Example: the first sheet for Roadway Plan & Profiles sheet (C-ML_P&P) would have a PDF file named C001.pdf. The workflow below explains how to automate this process. This process can be a big time saver when creating PDFs for cross sections.

1. *First open or create a Batch Plot PDF job (.job) as explained in workflow 2 of this chapter. Make sure that the .dgn files are listed in plan sheet order within the plot job. Move files that are out of sequence by dragging and dropping them in the correct position. Or, you may select Edit>Move Files... within the Batch Plot dialog. It is possible to move multiple files at once.*

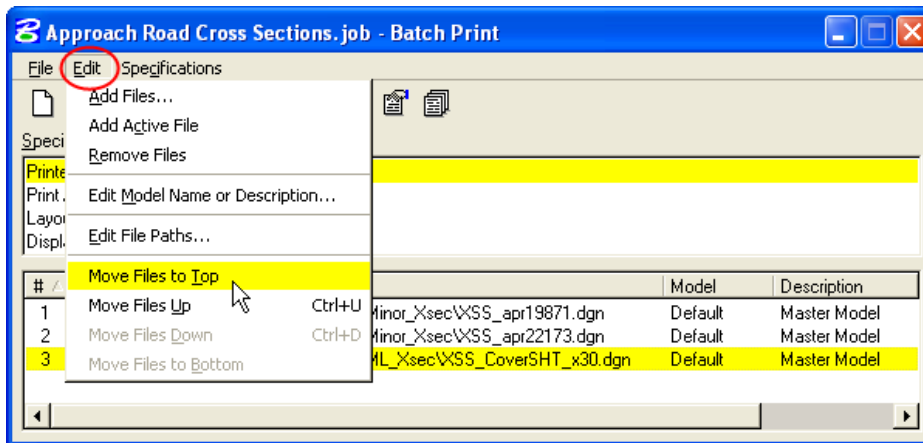


Figure 11-3: Print Batch Sequencing

2. *Highlight Printer within the Specifications Controlling Printing window and then select the Specifications Properties icon.*

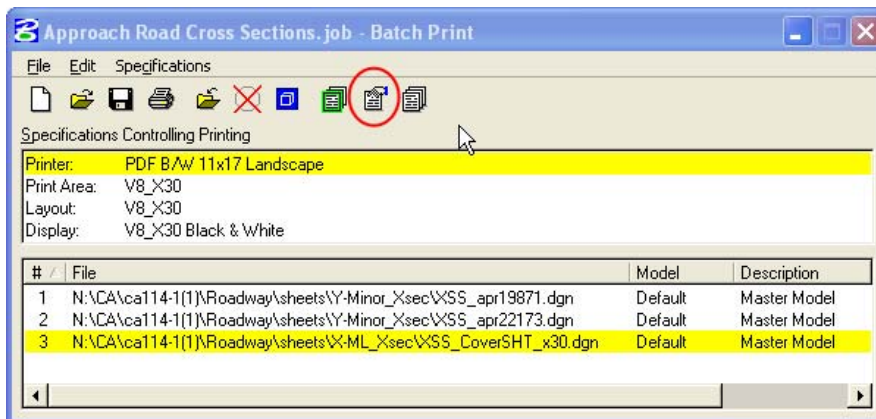


Figure 11-4: Printer Specifications Properties



3. Set the correct printer driver, paper size and orientation for the desired output.
4. Within the Output and Post Processing settings, ensure that the Print to: File option is selected.
5. Unselect the Print document set to single file option.
6. Browse and select the directory that the PDF files will be placed.

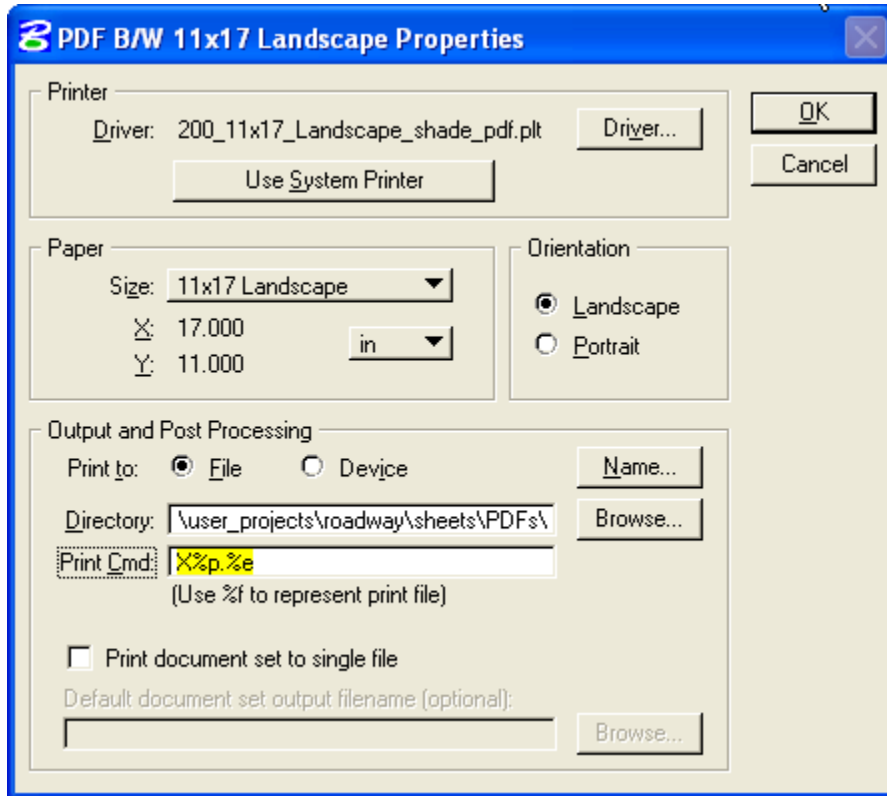


Figure 11-5: PDF Print Properties

7. The Print Cmd: settings are to establish the naming convention for the PDF files. Options for the naming strings are as follows:
 - *Normal character*: for example “C” will place a “C” in the name of the PDF files generated
 - *%b*: inserts a boundary counter that starts at 001 for all print boundaries within the specified .dgn files. (This typically works for multiple .dgn files, but has a potential for resetting the counter to 001 for each individual .dgn in the plot job.) If used, verify your PDF files are correctly numbered.
 - *%e*: inserts the file extension into the name.
 - *%j*: inserts the name of the Batch Plot (.job) into the PDF name.
 - *%p*: Inserts a plan sheet counter starting at 001 and is continuous for multiple .dgn files in the plot job (preferred method).



The advisable method for CFL projects is indicated above in Figure 11-5. The "X" represents the alphanumeric sheet number in the plans. In this example, it is for a Mainline Cross Section sheet. The resulting PDF names would be X001.pdf, X002.pdf, and X003.pdf...

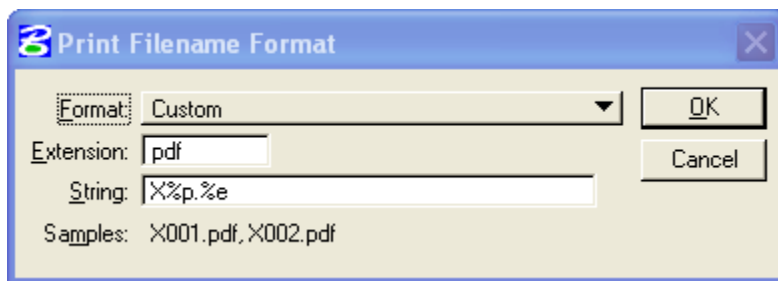


Figure 11-6: Print Filename Format

To set the Print Cmd, select the Name button. Select "Custom" for the format options. Use "pdf" for the Extension. Then for the string code use "Alphanumeric letter"%p.%e. Verify the naming output per the Samples: line.